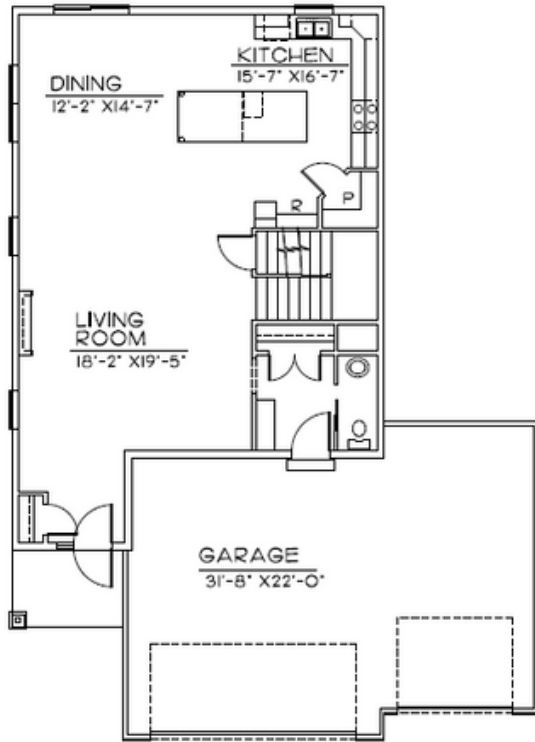




TRADITIONAL



CRAFTSMAN



FIRST FLOOR • 1081 SQ.FT.

MAIN FLOOR

Main Features

-  3 Bedroom / Optional 4th
-  3 Bath
-  3 Car Garage
-  2235 Finished Square FT.

The Mackenzie

402.305.4031

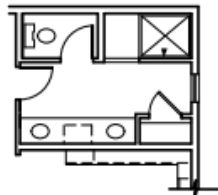
www.storyhomesomaha.com

GENERAL INFORMATION

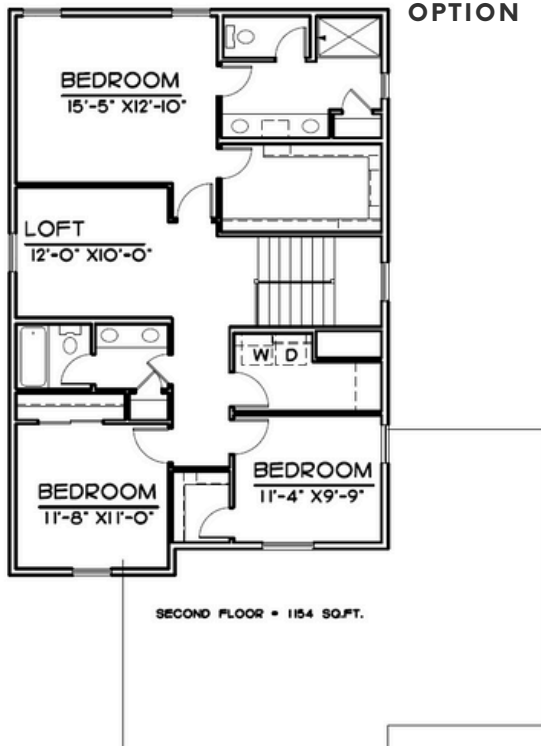
- Two Story
- 3 - 4 Bedrooms
- 3 Bathrooms
- 3rd Car Garage
- 2235 Base SQFT



4TH BEDROOM
OPTION



WALK-IN
SHOWER
OPTION



SECOND FLOOR

INCLUDED FEATURES

- Wide Open Floor Plan
- Subway Backsplash in the Kitchen
- Electric 50" Fireplace
- Stainless GE Appliances
- LVP Throughout Main Floor Area
- Quartz Countertops
- Delta Plumbing Fixtures
- Interior Door Style Choices
- Chrome Hardware and Fixtures
- 2nd Floor Laundry
- Huge 8' Primary Bath Vanity
- Linen Closet in Primary
- Large Walk-in Closet in Primary
- Wood Shelving Throughout
- James Hardi Cement Board Siding
- Sprinkler System- 5 Zone
- Energy Efficient Windows
- 5 Year Dry Basement Warranty
- 1 Year Builder Warranty
- Elevation Options
- Optional 4th bedroom
- Optional Finished Basement
- Passive Radon System
- Humidifier Included
- Gas and Electric Hook Ups to Oven range Included
- 2x6 Exterior Walls
- Typar House Wrap

CONNECT WITH US

Kristina Philbin: 402.305.4031
info@storyhomesomaha.com

 storyhomesomaha.com



@Storyhomesomaha



@Storyhomesomaha



storyhomesomaha



Story Homes Omaha